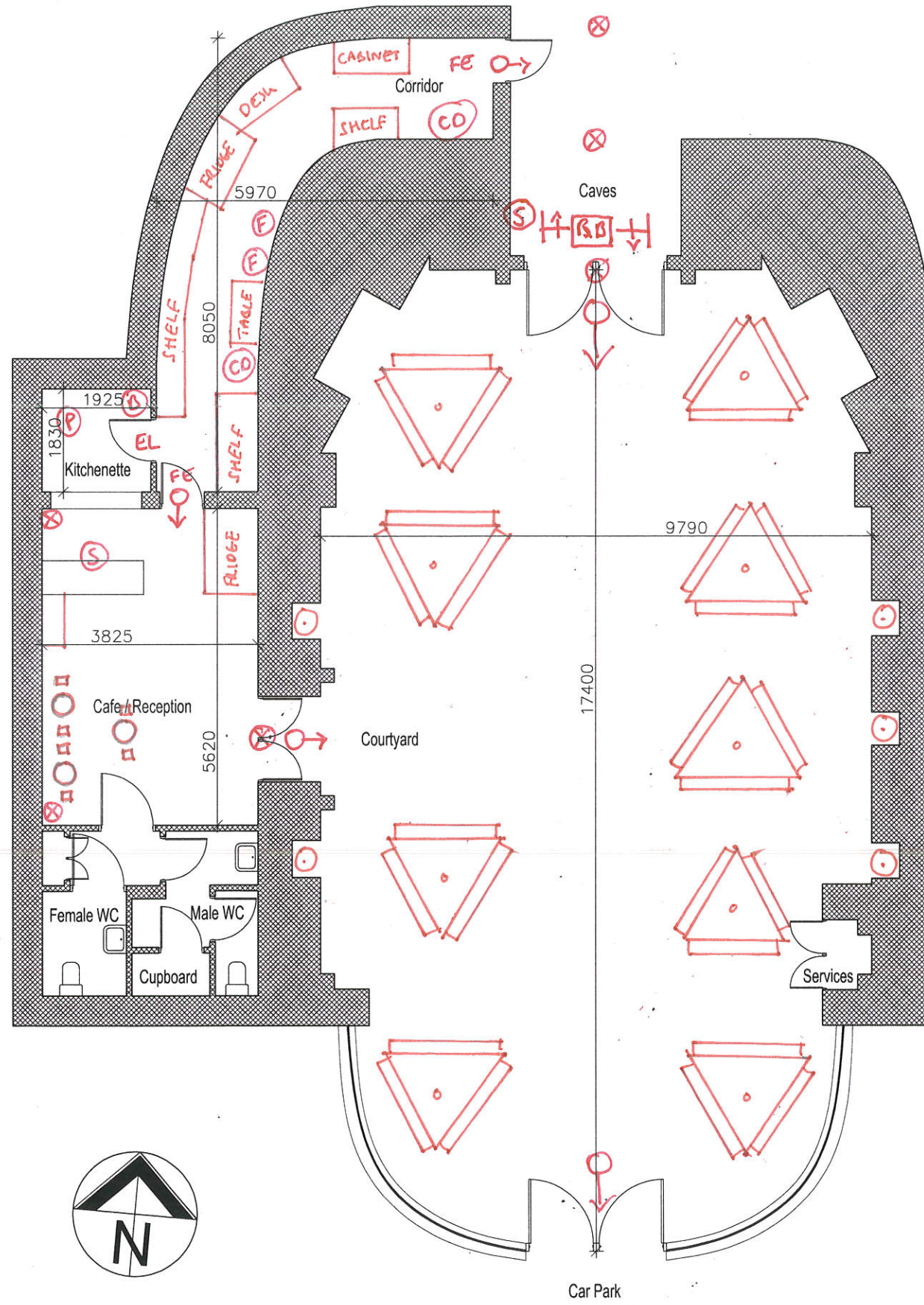


KEY

- ⊗ CCTV
- FIRE EXIT
- Ⓢ FIRE ALARM SOUNDER
- Ⓟ POWDER FIRE EXTINGUISHER
- Ⓢ CO CARBON DIOXIDE FIRE EXTINGUISHER
- Ⓢ F FOAM FIRE EXTINGUISHER
- Ⓢ B FIRE BLANKET
- [FMP] FIRE MEETING POINT
- EL EMERGENCY LIGHT
- FE FIRE EXIT SIGN - ILLUMINOUS + DIRECTIONAL
- ↑↓ TURNSTILE IN / ONE DIRECTIONAL
- ↑↓ TURNSTILE OUT / ONE DIRECTIONAL
- [RB] REMOVABLE BARRIER
- OUTSIDE BIN
- Ⓢ SMALL TABLE AND CHAIRS
- △ LARGE OUTDOOR TABLE



[FMP]

Rev Date Amendment
 <revision details>

CLIENT
 West Wycombe Estate

PROJECT
 Survey of West Wycombe
 Caves' Café

DRAWING
 Plan

CHECKED
 MM

DRAWN
 KL

X-REF(S)
 4971-xref

DATE
 September 2017

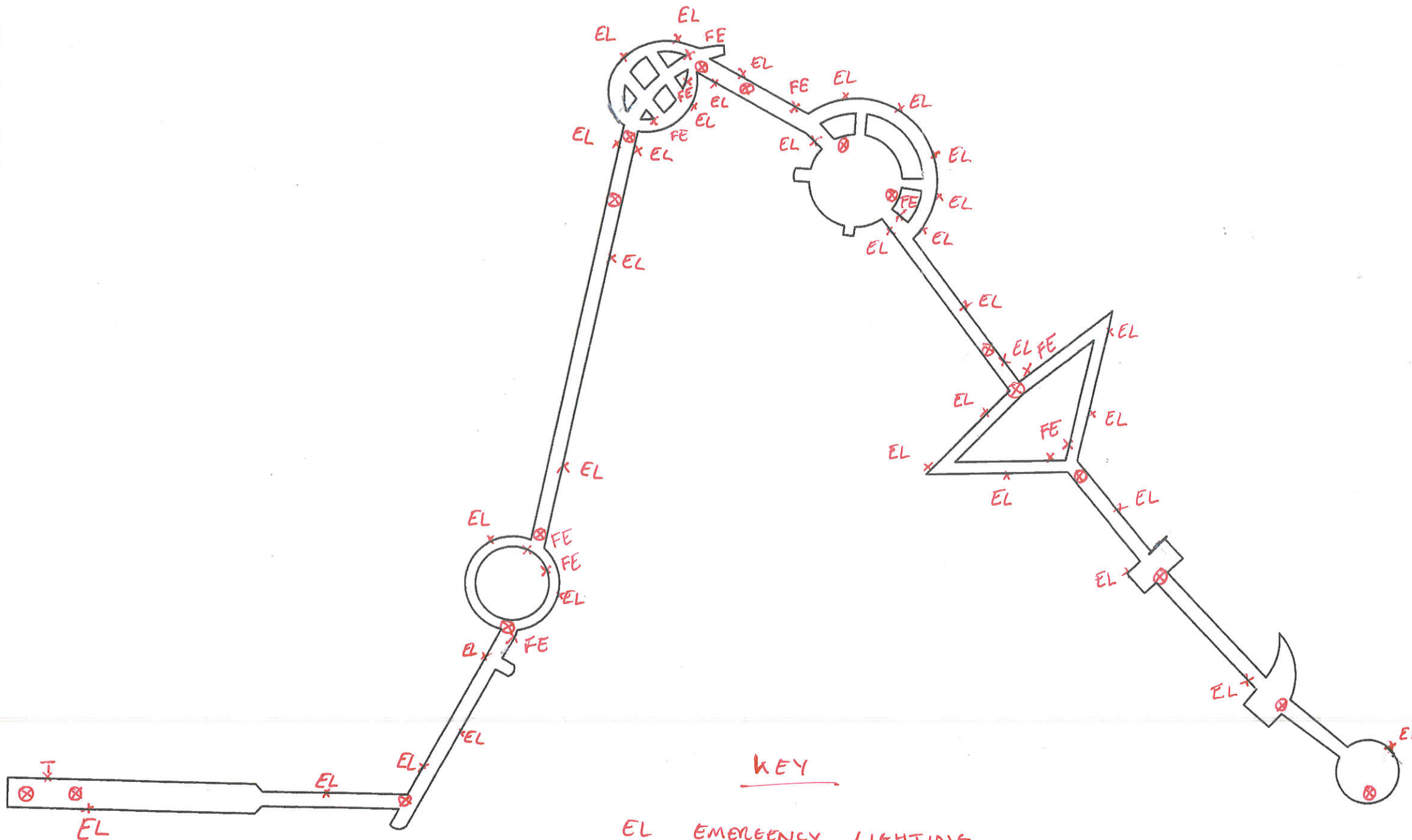
SCALE
 <-> @ A1

DRAWING NUMBER
 4972-01

BROCKLEHURST ARCHITECTS LIMITED
 15 High Street West Wycombe
 Buckinghamshire HP14 3AE
 01494 521621
 www.brocklehurst.com

BROCKLEHURST ARCHITECTS

DO NOT SCALE FROM THIS DRAWING



KEY

- EL EMERGENCY LIGHTING
- FE DIRECTIONAL ILLUMINOUS FIRE EXIT SIGN
- ⊗ CCTV
- T WATER TAP

REVISION	DETAILS	DATE	DRAWN	CHK'D	APP'D

CLIENT
WEST WYCOMBE ESTATE

PROJECT
HELLFIRE CAVES

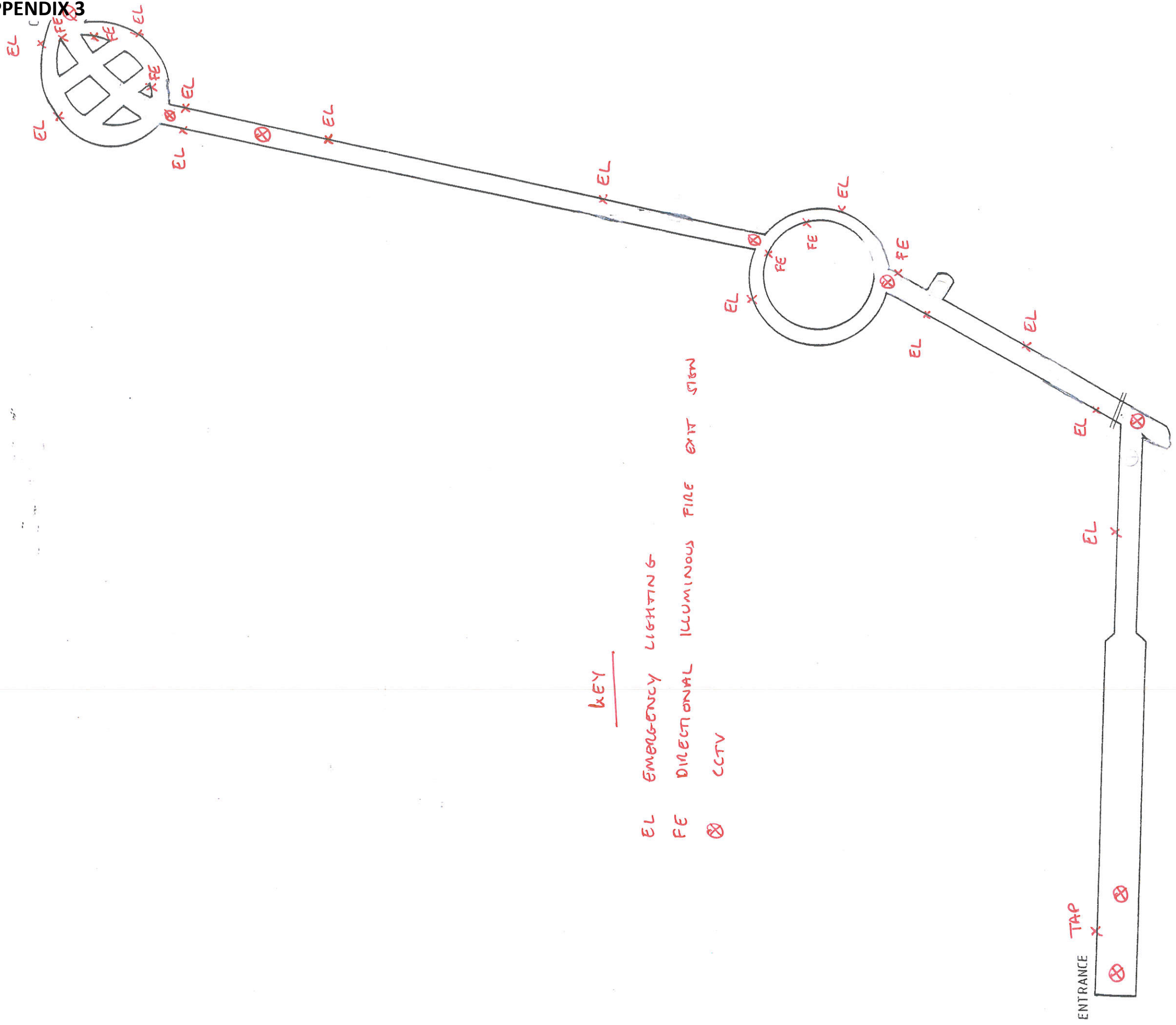
DRAWING TITLE

DRG No. NL04872/03	SCALE NTS	DATE MAR 2010
DRAWN BY JD	CHECKED BY	APPROVED BY

<input checked="" type="checkbox"/> STOKE-ON-TRENT (HEAD OFFICE)	TEL 0845 111 7777	<input type="checkbox"/> CARDIFF	TEL 029 2072 9191
<input type="checkbox"/> NEWCASTLE UPON TYNE	TEL 0191 232 0943	<input type="checkbox"/> LEIGH	TEL 01942 260101
<input type="checkbox"/> WEST BROMWICH	TEL 0121 590 0909	<input type="checkbox"/> SHEFFIELD	TEL 0114 245 6244
<input type="checkbox"/> LONDON	TEL 020 7287 2872	<input type="checkbox"/> EDINBURGH	TEL 0131 555 3311
		<input type="checkbox"/> LIVERPOOL	TEL 0151 494 5431



APPENDIX 3



KEY

- EL EMERGENCY LIGHTING
- FE DIRECTIONAL ILLUMINOUS FIRE EXIT SIGN
- ⊗ CCTV

ENTRANCE TAP
X

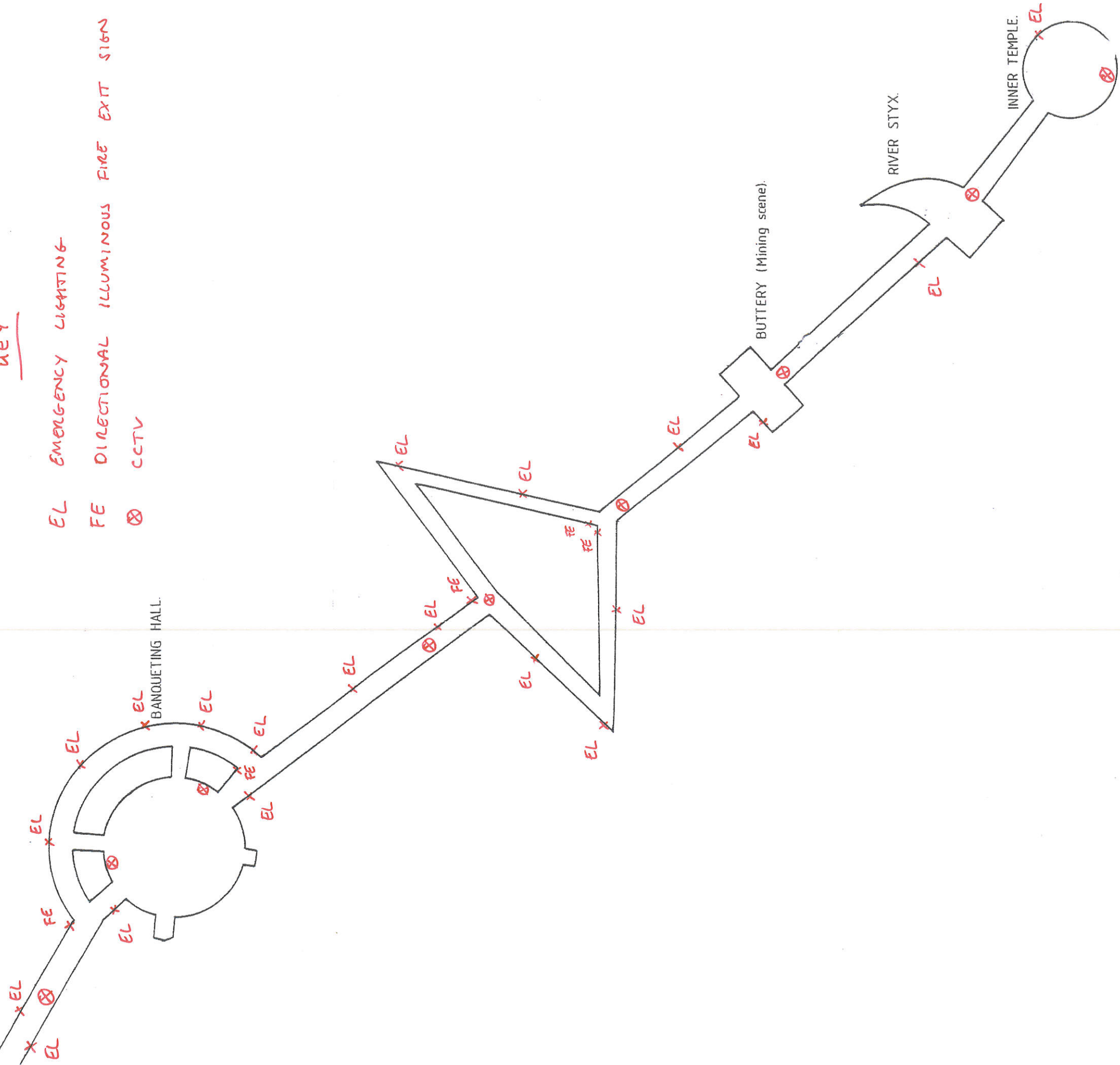
WEST WYCOMBE CAVES LIMITED.
HELLFIRE CAVES.

PLAN REFERRED TO.

COMBS.

KEY

- EL EMERGENCY LIGHTING
- FE DIRECTIONAL ILLUMINOUS FIRE EXIT SIGN
- ⊗ CCTV



DRG. No. 3548

SCALE:- 1" to 25'

WARDELL ARMSTRONG

LANCASTER BUILDING, HIGH STREET, NEWCASTLE,
STAFFS. ST5 1PQ.

TEL: 0782 612626 TELEX: 36607 FAX: 0782 662882